



Salesforce Tower



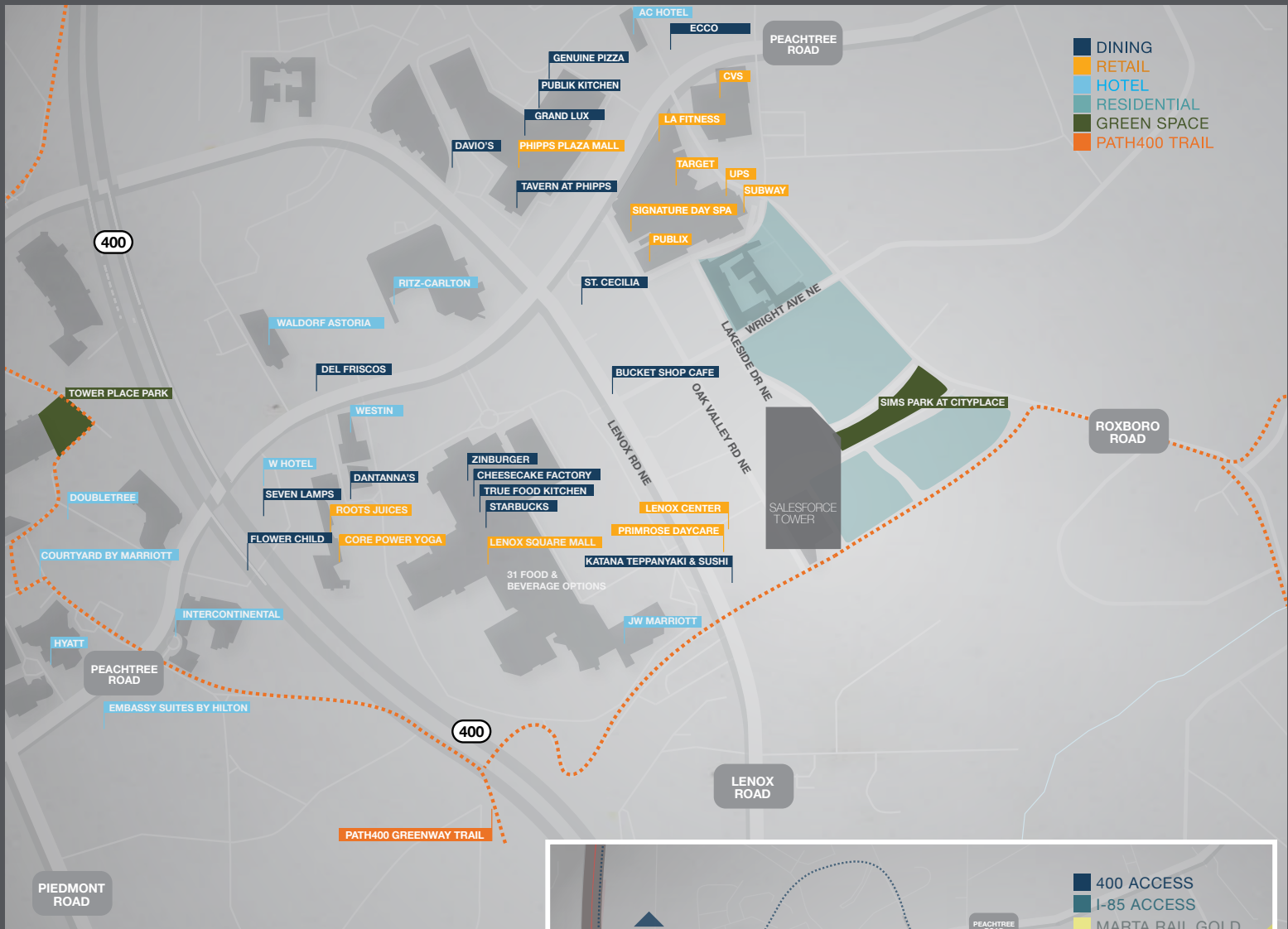
THOUGHTFULLY REPOSITIONED

The innovative ownership of Salesforce Tower and architects at Perkins+Will believe design has the power to transform lives and enhance communities. Their reinvention of Salesforce Tower pays homage to the hospitable history of this Buckhead Heights neighborhood—the “Joyeuse Estate” of esteemed Atlantan John K. Ottley—while leveraging modern strategies for workplace design. The **renovated lobby**, **added amenities** and **outdoor workspaces**, along with **upgraded corridors** and **expanded conference facilities** are infused with a welcoming, understated elegance. Renovation debut was October 2018.



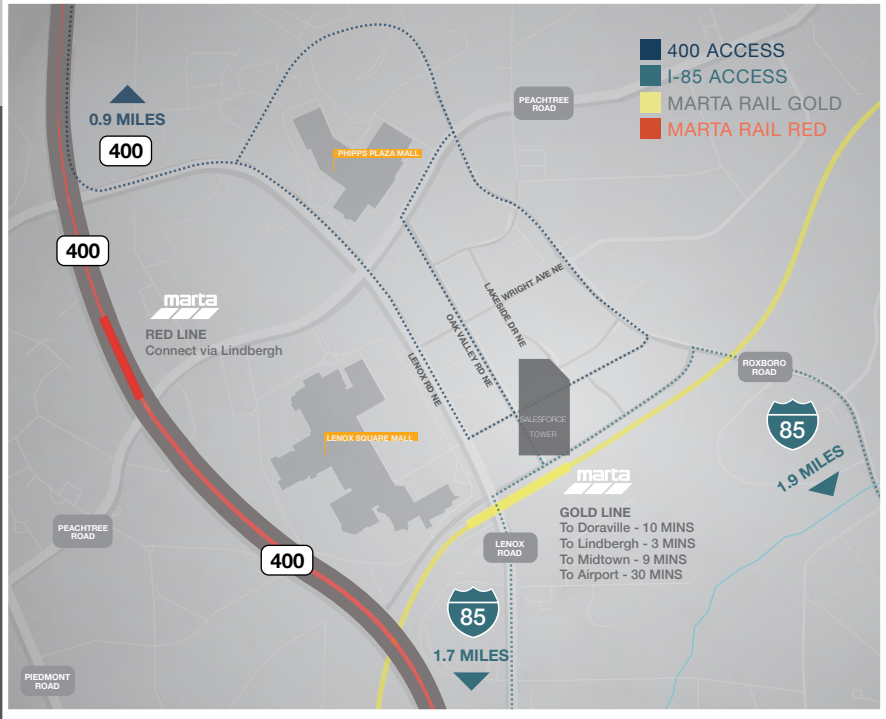
EXCEPTIONALLY DESIRABLE LOCATION

Perfectly located, access to and from Salesforce Tower is simple – walk downstairs to **MARTA's Lenox Station**, take pedestrian-friendly paths and bike **PATH 400** multi-use trail to popular residential neighborhoods or drive seconds away to **GA-400** and **I-85**. Also highly in demand, some of the Southeast's finest retail and dining—**50 nearby restaurants**, **world-class hotels** and **endless shopping** all in walking distance.



UNPARALLELED ACCESS AND AMENITIES

- Avoid congestion with multiple ingress/egress options to I-85 & 400.
- Best proximity to I-85 in Buckhead
- On-site, covered access to MARTA Lenox Station
- Vibrant surrounding amenity base with over 50 restaurants, 5,000 residential units, 11 hotels, numerous retailers and immediate access to Path 400.



NICOLE GOLDSMITH
 Vice President
 +1 404 923 1254
 nicole.goldsmith@cbre.com

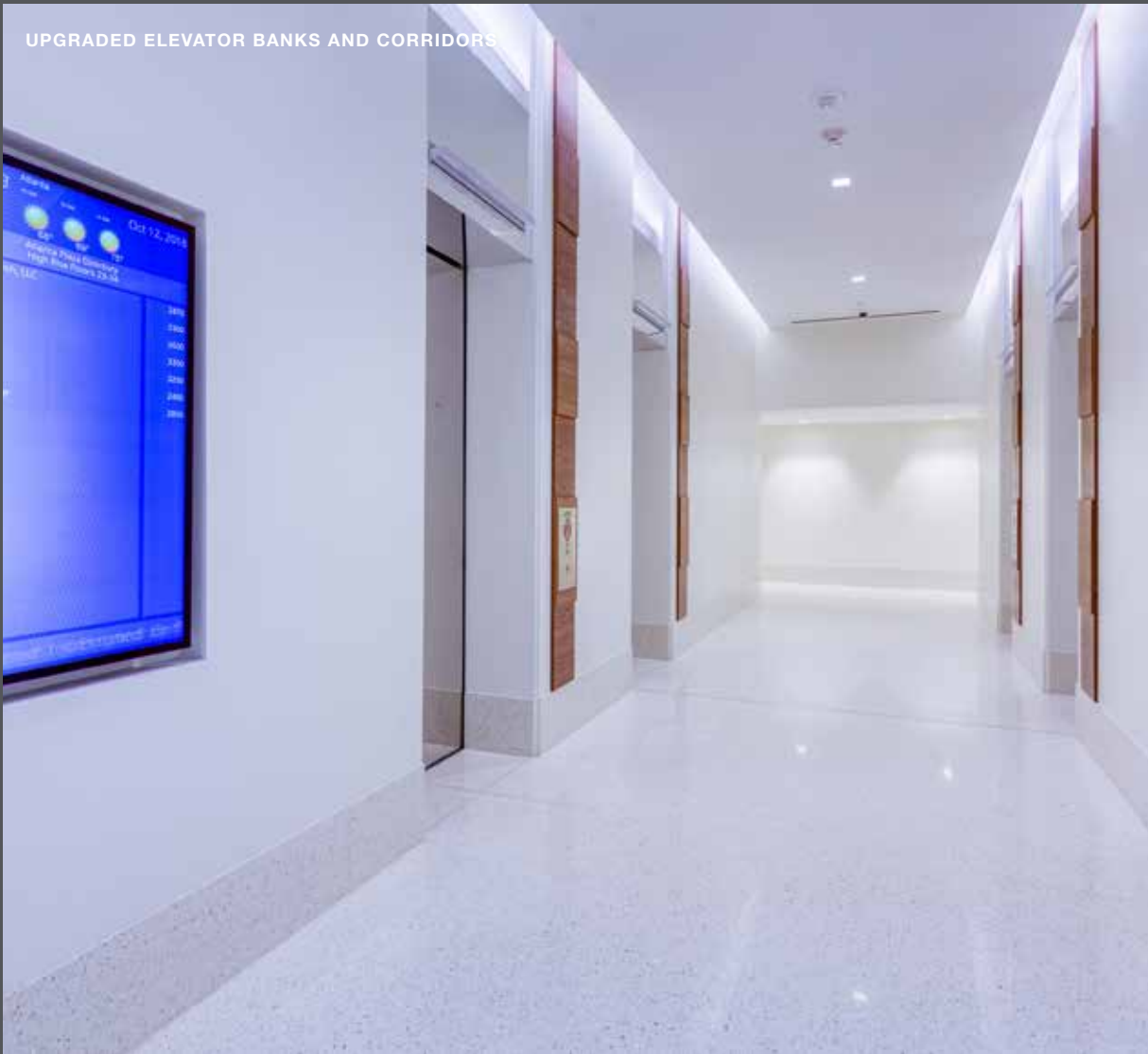
CHRIS PORT
 Executive Vice President
 +1 404 504 5964
 chris.port@cbre.com



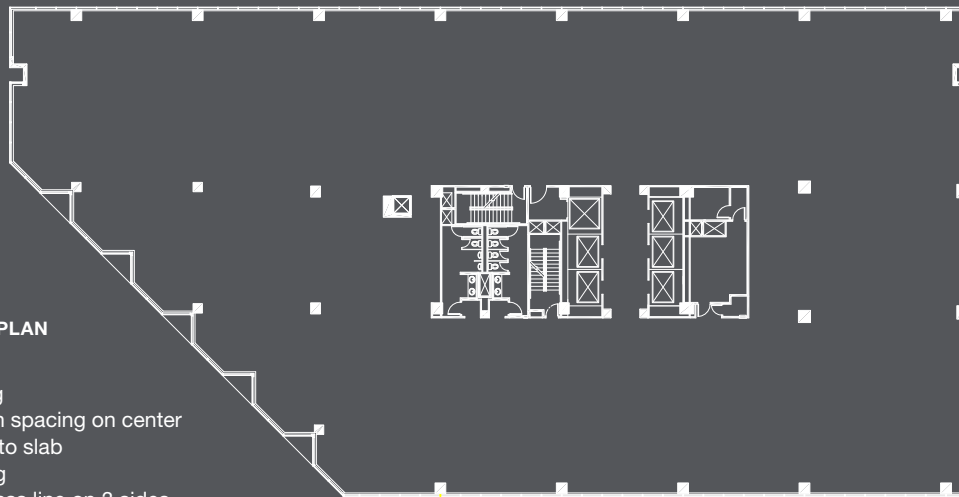
A MODEL 21ST CENTURY WORKPLACE

The most dynamic, diverse ecosystem in Buckhead, you'll find synergies with like-minded business innovators like **Salesforce**, **RentPath**, and **Rubicon** whose talent thrives on our **superior ownership and amenities**—lush outdoor spaces, gourmet coffee, bar & dining offerings, high-speed fiber and more. Paired with upgraded corridors/ elevator lobbies and diverse office build-out options, Salesforce Tower is the ideal canvas for a flourishing workforce.

UPGRADED ELEVATOR BANKS AND CORRIDORS



DIVERSE TENANT BUILD-OUT CAPABILITIES



TYPICAL FLOOR PLAN

- 24,500 RSF
- 5' mullion spacing
- 30' typical column spacing on center
- 13' ceiling height to slab
- 9' dropped ceiling
- Floor to ceiling glass line on 3 sides

NORTH > 0 5 10 20



NICOLE GOLDSMITH
 Vice President
 +1 404 923 1254
 nicole.goldsmith@cbre.com

CHRIS PORT
 Executive Vice President
 +1 404 504 5964
 chris.port@cbre.com



EVERYTHING AT YOUR FINGERTIPS

Salesforce Tower effortlessly balances work and life with signature **concierge** services, **car wash** and detailing, convenient **dry cleaning** and everyday **sundries**. Delicious **dining** and high-end **conference** facilities complement your business needs while our **Fitness Center's** lockers, showers and towel service make healthy living an easy choice.



80-SEAT
CONFERENCE
FACILITY WITH
FLEXIBLE
CONFIGURATIONS



CAFE
SERVING COFFEE,
BEER AND WINE



CANTEEN ON PACES
CAFE WITH OUTDOOR
COLLABORATIVE
WORKSPACE



RENOVATED
FITNESS CENTER



WILDLEAF



DRY CLEANING



CARWASH



CONCIERGE

CBRE

BANYAN STREET
CAPITAL

NICOLE GOLDSMITH
Vice President
+1 404 923 1254
nicole.goldsmith@cbre.com

CHRIS PORT
Executive Vice President
+1 404 504 5964
chris.port@cbre.com



UPGRADED ENTRY OUTDOOR GREEN SPACE

LEGACY MEETS THE NEW BUCKHEAD

This unique, high profile 34-story glass tower embodies the spirit of modern prestige with a gracefully minimalist interior redesign. Located in Buckhead Heights, at the heart of the new Buckhead renaissance, Salesforce Tower features high-demand 21st century essentials, **exceptional access** and beautiful features for today's modern office users. **LEED® Gold**, EPA Energy Star certifications and **dramatic skyline views** ensure a healthy, sustainable workplace.

ICONIC BUILDING PROFILE AND
DRAMATIC SKYLINE VIEWS



PERFECTION AT A GLANCE

SALESFORCE TOWER

950 East Paces Ferry Road Atlanta, GA 30326
8am-6pm M-F, 8am-1pm Sat

BUILDING SIZE	631,274 RSF
STORIES	34
TYPICAL FLOOR PLATE	24,500 RSF
SPACING	5' Mullions / 30' Typical Columns on Center
CEILING HEIGHT	Typical Floor 9' Dropped Ceiling / 13' to Slab Lobby Level 18'
SECURITY	24-hour on-site (minimum 2 officers on duty at all times)
PARKING	2.37/1,000 (structured)
INGRESS / EGRESS	GA 400 / I-85, East Paces Ferry Road, Lenox Road, Roxboro Road, Peachtree Road
PUBLIC TRANSPORTATION	Direct MARTA Rail Access (Gold Line), BUC Community Shuttle
AMENITIES	On-site building management, cafe, Wildleaf cafe and salads, dry cleaner, car detail and conference center.

FITNESS CENTER Located on 8th floor. Supplied with modern weight training and cardio equipment. Large classroom available for group training. Men's and Women's locker rooms with showers and towel service. Renovated in 2012.

RESTAURANTS True Food, St. Cecilia's, Bantum & Bidy, Starbucks, The Bucket Shop, Seven Lamps, Dantanna's, Davio's, Publik Kitchen, Ecco, Grand Lux, Genuine Pizza

HOTELS JW Marriott, Atlanta Marriott, Buckhead Westin, Ritz Carlton, AC Hotel, Waldorf Astoria, W Hotel, Intercontinental, Embassy Suites, Grand Hyatt

NOTABLE TENANTS Salesforce, RentPath, Securities and Exchange Commission, Wells Fargo, Rubicon

FIBER AT&T, Verizon, Cogent Communications

SUSTAINABILITY LEED® Gold and EPA Energy Star Certifications

RENOVATION UPGRADES

- Reinvention of Entry, Lobby, Elevator Banks, Corridors and Outdoor Spaces
- New retail including coffee, bar and dining
- Lush new curb appeal

CBRE

BANYAN STREET
CAPITAL

NICOLE GOLDSMITH
Vice President
+1 404 923 1254
nicole.goldsmith@cbre.com

CHRIS PORT
Executive Vice President
+1 404 504 5964
chris.port@cbre.com

CBRE

BANYAN STREET
CAPITAL

NICOLE GOLDSMITH

Vice President

+1 404 923 1254

nicole.goldsmith@cbre.com

CHRIS PORT

Executive Vice President

+1 404 504 5964

chris.port@cbre.com